

MAPLE LEAF HOMES



Modular
Homes

**Bungalow
Split Entry**

MAPLE LEAF HOMES

Every Maple Leaf Home is manufactured with high quality materials by experienced craftsmen. You can take comfort in knowing that your investment will be protected by some of the best warranties in the Industry.

- One year Maple Leaf Home manufacturer's warranty against defects in materials and workmanship.
- Limited lifetime warranty on roofing shingles provided by shingles manufacturer.
- Limited lifetime warranty on vinyl siding provided by siding manufacturer.
- Limited lifetime warranty on fixtures provided by fixtures manufacturer.
- Limited lifetime warranty available on windows by the window manufacturer.
- 10 year limited structural warranty available through Atlantic Home Warranty Corporation (available in Atlantic Canada).



WHY CHOOSE A MAPLE LEAF HOME?



- Locally owned and operated since 1985
- Award winning manufacturer for energy efficiency and customer satisfaction
- Industry leading manufacturer of energy efficient homes
- Energuide and Energy-Star certified builder
- Over 30 convenient locations to serve you better throughout Atlantic Canada, Quebec, Ontario and the New England States
- The most comprehensive warranties in the industry to protect your investment
- High quality custom cabinetry and interior finishes
- Efficiently manufactured indoors in a controlled environment
- In-plant quality control for every step of the manufacturing process ensures a top quality product that meets or exceeds the most up to date building codes
- Accurate scheduling – no weather delays
- No cost overruns – no waiting for sub contractors
- Environmentally friendly production – waste is reduced and recycling is maximized
- Plywood floor and wall construction
- Pre-engineered and individually custom built
- Premium building materials to assure top performance and service
- Professionally designed plans to ensure functionality for comfortable living
- Quality and innovations that are responsive to your living needs and wishes
- Custom designed plans

All Maple Leaf Homes include these standard features:

- Limited lifetime warranty on roof shingles
- Limited lifetime warranty on vinyl siding
- 30 year warranty on windows
- High quality designer cabinets
- Kiln dried lumber
- Quality plumbing fixtures
- Plywood floor and wall construction
- Painted wood interior trim (no MDF)
- Energy efficient

HOMESTEAD
BUNGALOW / RANCH

2 BEDROOMS
2 BATHROOMS

1,462 SQUARE FEET
50' x 32'
DIMENSIONS

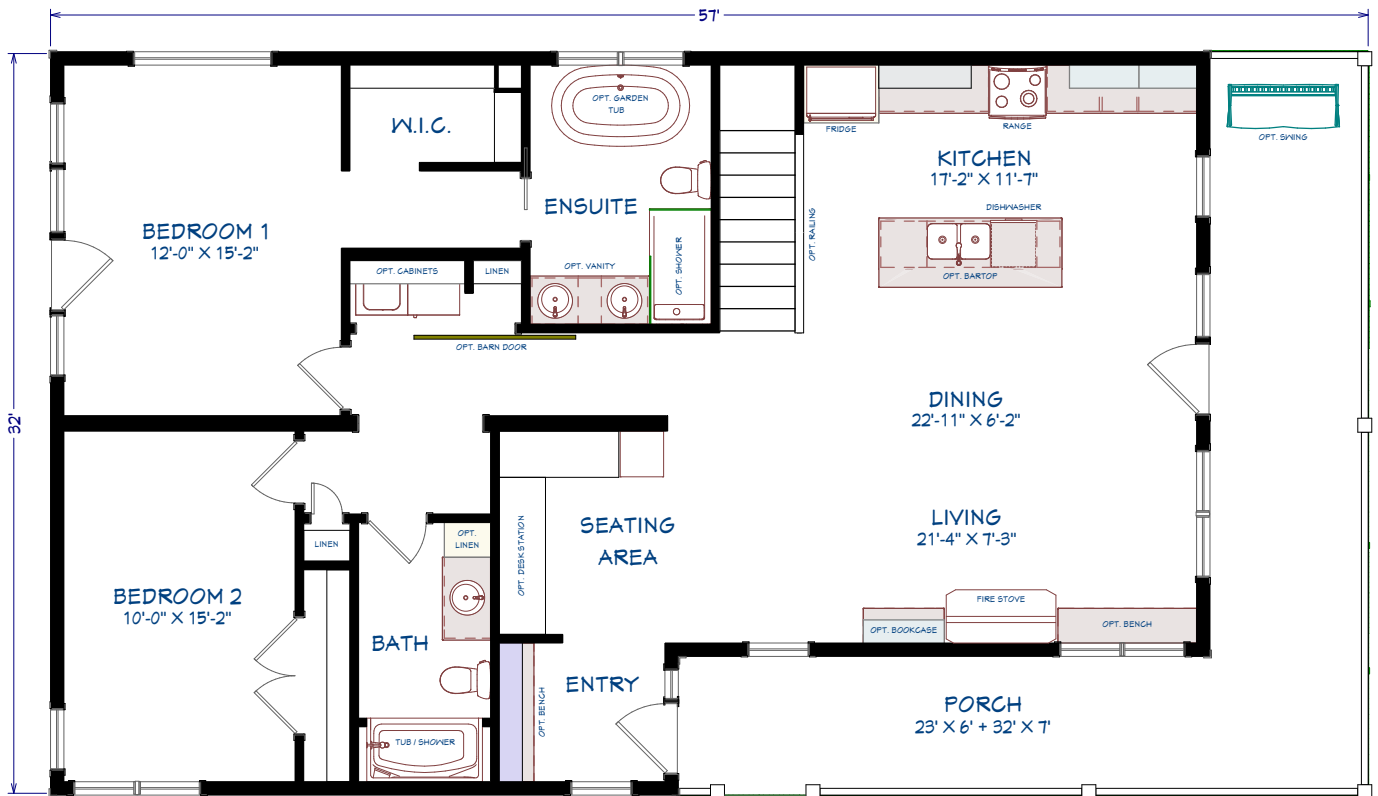


OPTIONS

- Diamond kote board & batten siding
- Casement windows c/w black out & inside trim
- Garden doors c/w black out & inside trim
- 96" High 5 panel interior doors
- Custom desk & bar
- Window seat & bookcase around fireplace
- Wood burning fireplace w/ stone & custom mantel
- Upgraded lighting throughout – w/ interior & exterior downlights in various areas

- Front entry bench w/ coat hooks
- Cedar porch swing
- Rustic 7" wide hardwood flooring
- 84" Custom barn door painted "old blue jeans"
- 9'-0" Ceiling
- Roof extension over bedroom #1 garden door
- Upgrade plumbing fixtures and faucets
- Appliances

* Some items shown may be an option.



2 BEDROOMS, 2 BATHROOMS

1462 FINISHED SF
362 PORCH SF
1824 TOTAL SF

COUNTRYVIEW

BUNGALOW / RANCH

2 BEDROOMS
1.5 BATHROOMS

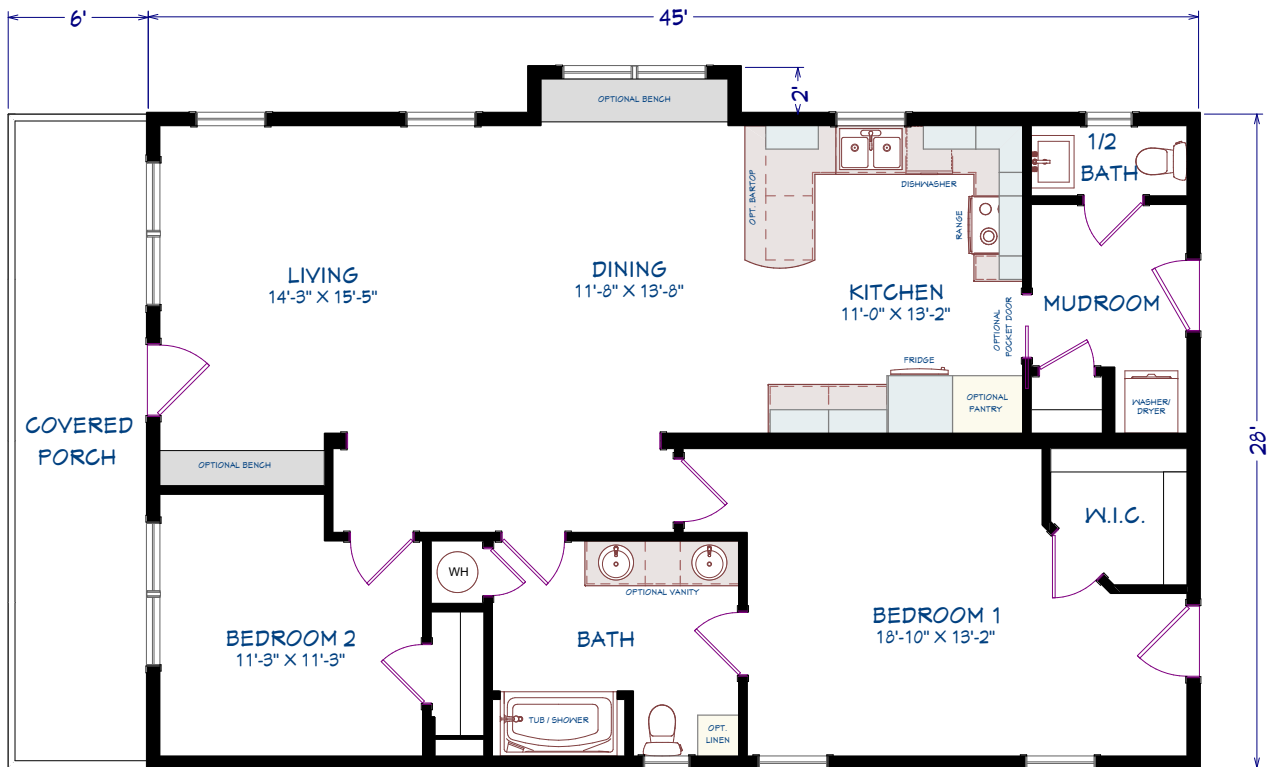
1,260 SQUARE FEET
45' x 28' DIMENSIONS



OPTIONS

- Upgrade vinyl siding w/ eastern white cedar shingles
- Custom windows c/w black outside trim & white inside trim
- Custom exterior doors c/w black outside trim & white inside trim
- Craftsman smooth interior doors c/w upgrade hardware
- Flat stock interior trim w/ extended window sills
- Upgrade lighting package w/ led bulbs
- Custom benches/ storage at front entry & dining room

- Custom craftsman exterior pillars & trim
- Hardwood flooring throughout main living space & bedrooms
- Ceramic tile in bathrooms & rear entry
- Custom roof style w/ walk-up attic for storage
- Upgrade plumbing fixtures & faucets
- Upgrade kitchen cabinets & hardware
- Appliances



2 BEDROOMS, 1.5 BATHROOMS
1260 SQ FT

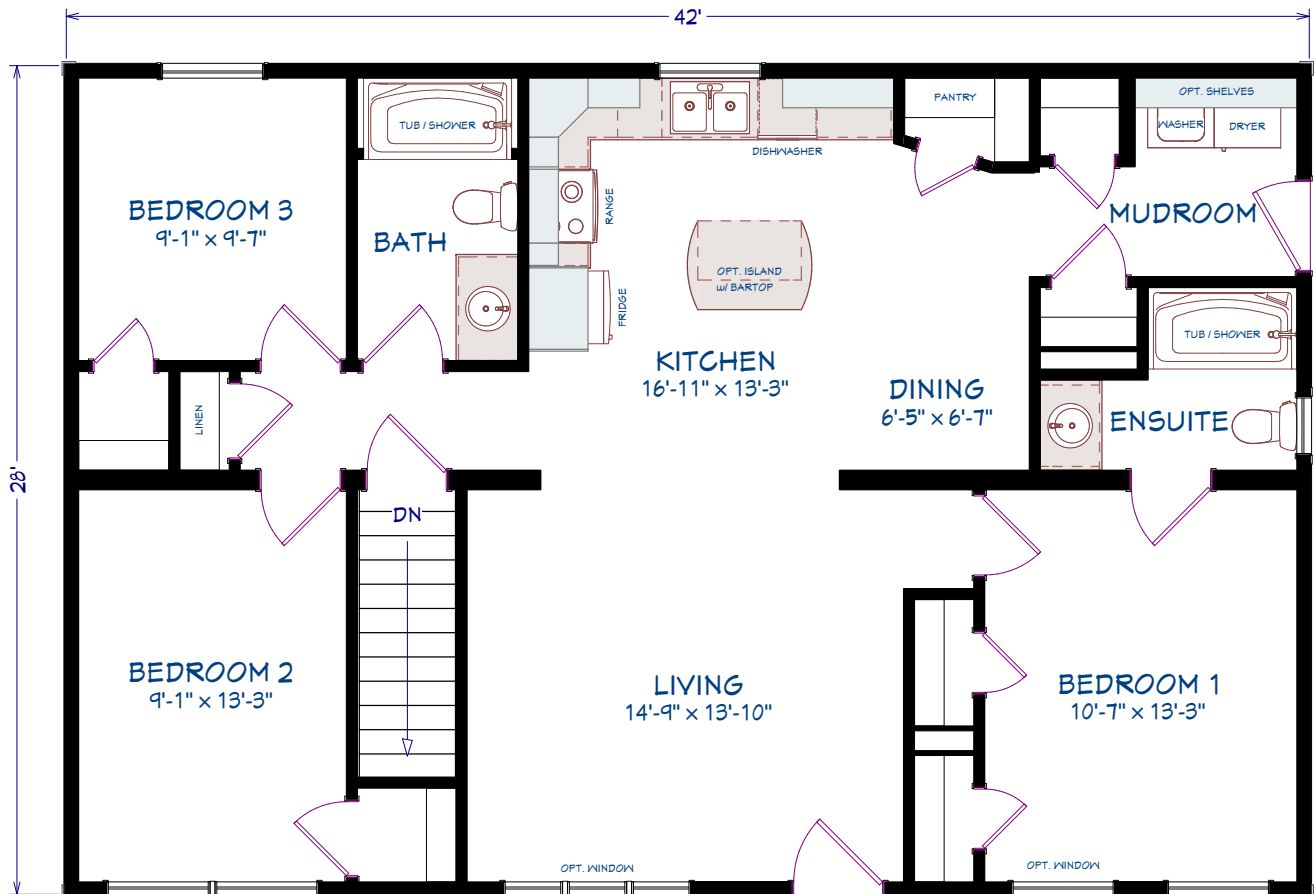
ML201
BUNGALOW / RANCH



3 BEDROOMS
2 BATHROOMS
1,176 SQUARE FEET
42' x 28' DIMENSIONS

OPTIONS

- Large dormer
- Mulled living room window
- Second coach light
- Upper window grills
- Second bedroom 1 window
- 3 1/2" Window trim
- Appliances



3 BEDROOMS, 2 BATHROOMS
1176 sq ft

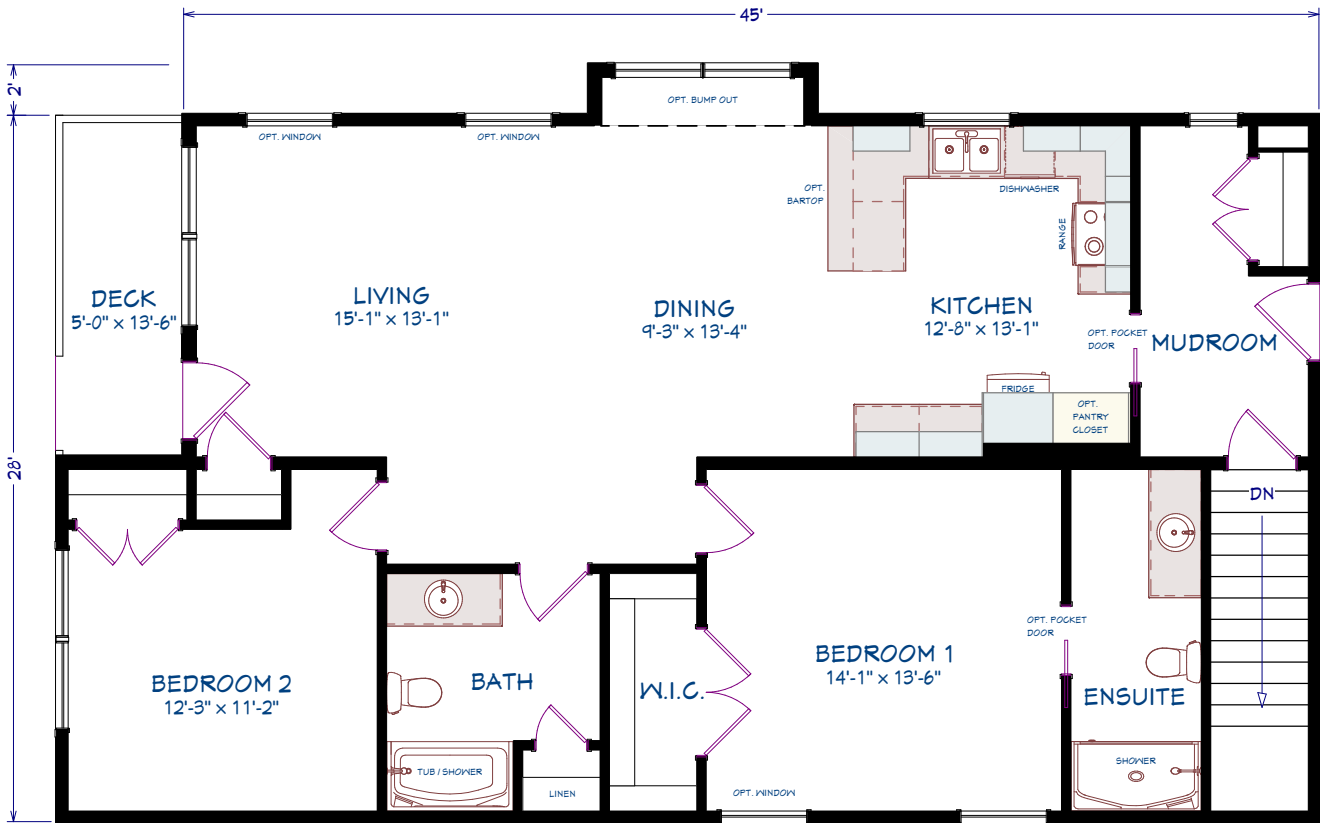
ML202
BUNGALOW / RANCH



2 BEDROOMS
2 BATHROOMS
1,329 SQUARE FEET
45'-50' x 28' DIMENSIONS

OPTIONS

- 5' Porch and railings
- Bump out
- Front door ¾ glass
- Additional living room windows
- 3 ½" Window trim
- Bedroom round top window
- Upper window grills
- Small gable round top window
- Stone vinyl siding
- Appliances



2 BEDROOMS, 2 BATHROOMS
1329 sq ft

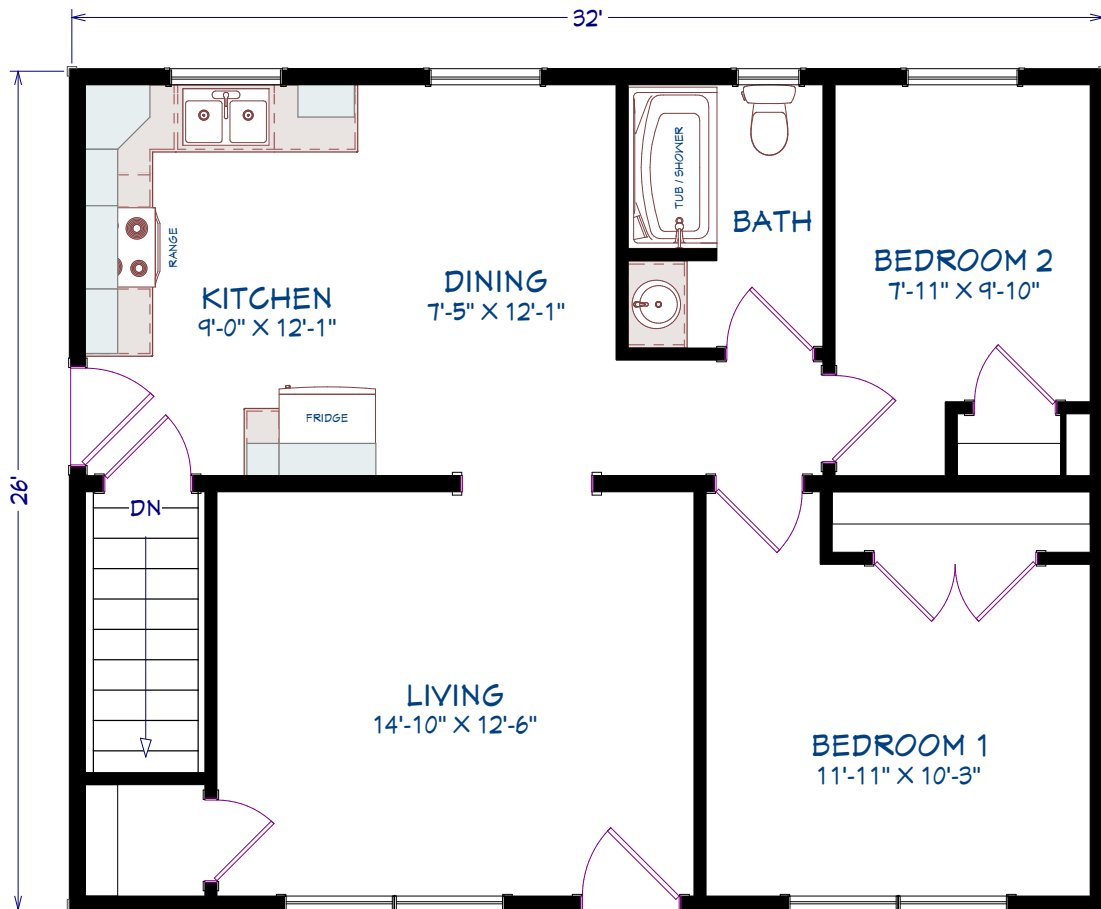
ML203
BUNGALOW / RANCH



2 BEDROOMS
1 BATHROOM
832 SQUARE FEET
32' x 26' DIMENSIONS

OPTIONS

- Large dormer
- Eyebrow roof
- False pillars
- Front door 3/4 glass
- Queen Anne window grills
- 3 1/2" Window trim
- Extra exterior light
- Appliances



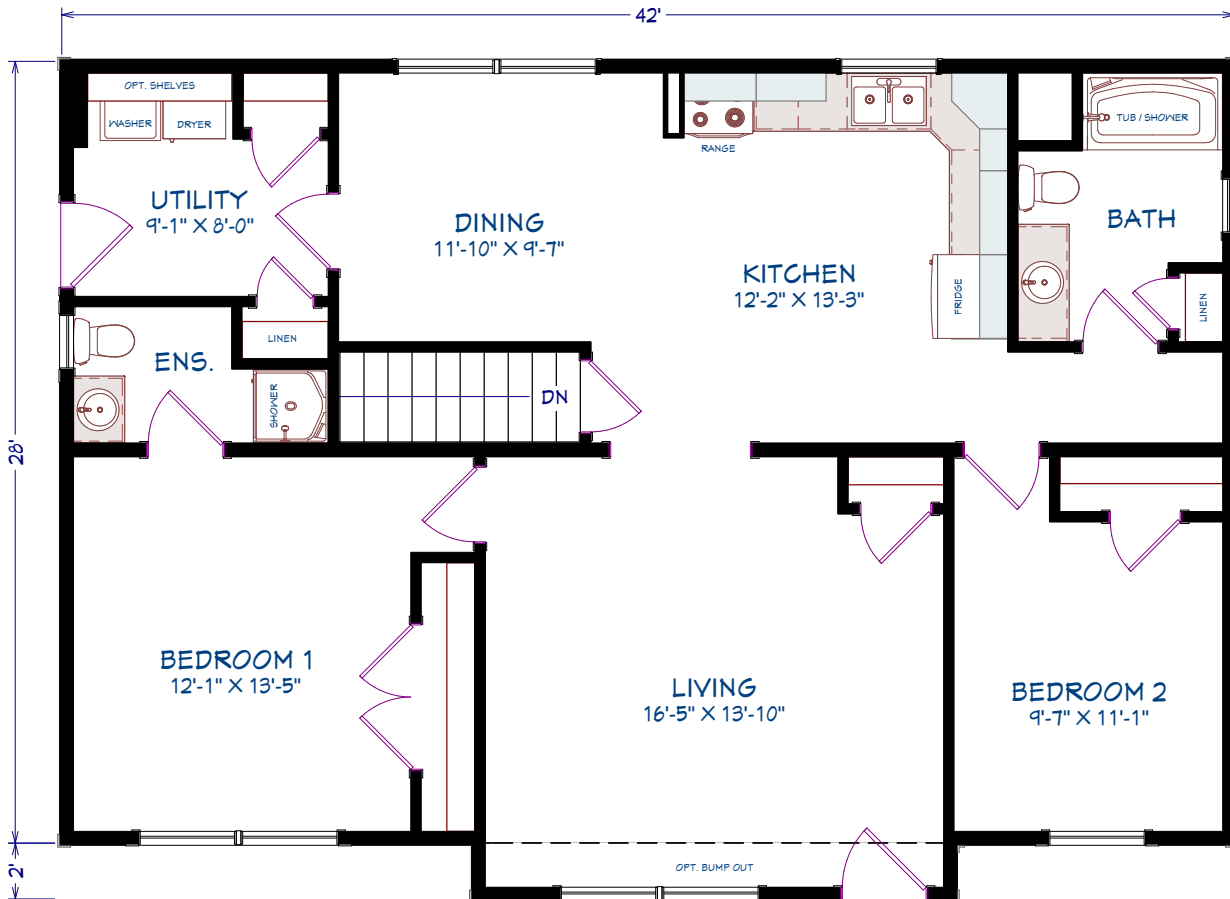
2 BEDROOMS, 1 BATHROOM
832 SQ FT

ML204
BUNGALOW / RANCH



2 BEDROOMS
2 BATHROOMS
1,176 SQUARE FEET
42' x 28' DIMENSIONS

- OPTIONS**
- Living room bump out
 - Large dormer
 - Eyebrow roof
 - Front door
 - Window grills
 - 5 1/2" Window trim
 - Window grills
 - Shake vinyl siding
 - Appliances



2 BEDROOMS, 2 BATHROOMS
1176 SQ FT

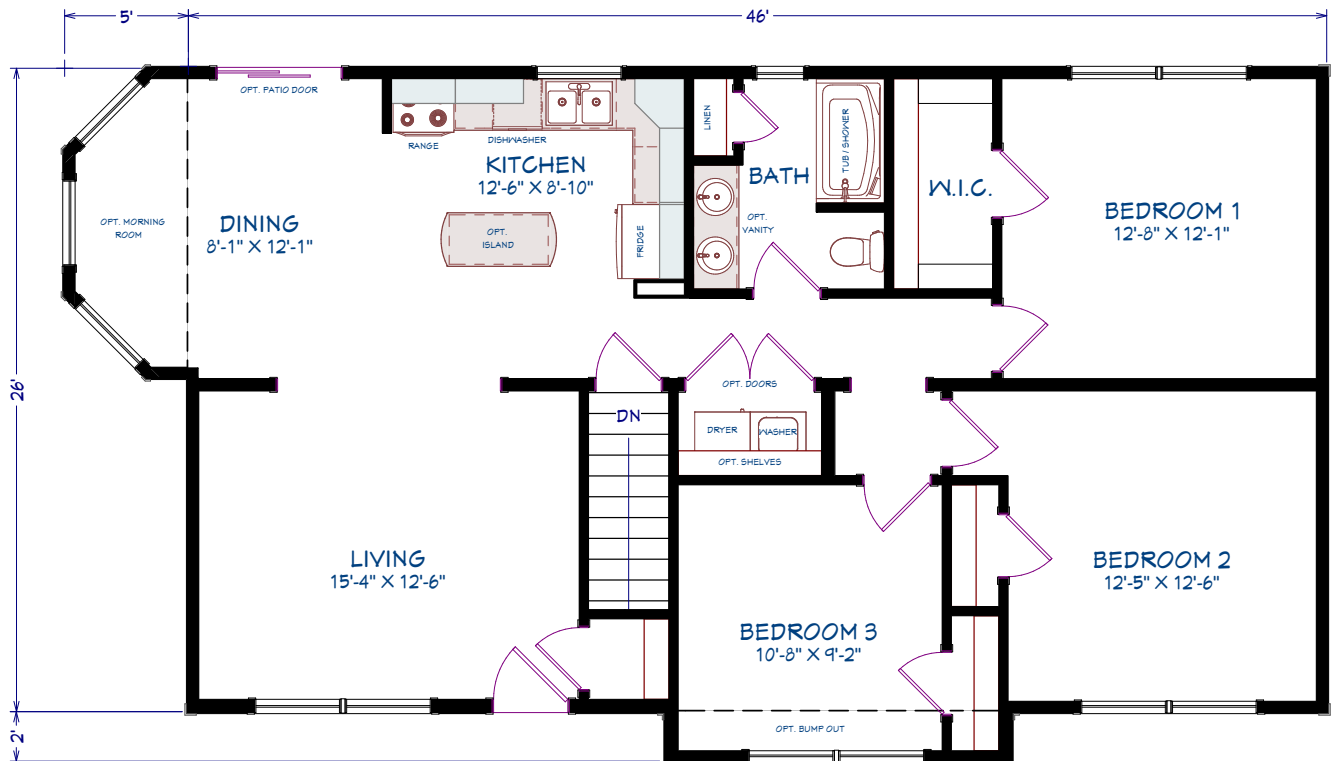
ML205
BUNGALOW / RANCH



3 BEDROOMS
1 BATHROOM
1,196 SQUARE FEET
46' x 26' DIMENSIONS

OPTIONS

- Morning room
- Bedroom bump out
- Large dormer
- 3 1/2" Window and door trim
- Coloured siding accessories
- Stone vinyl siding
- Appliances
- No window grills



3 BEDROOMS, 1 BATHROOM
1196 SQ FT

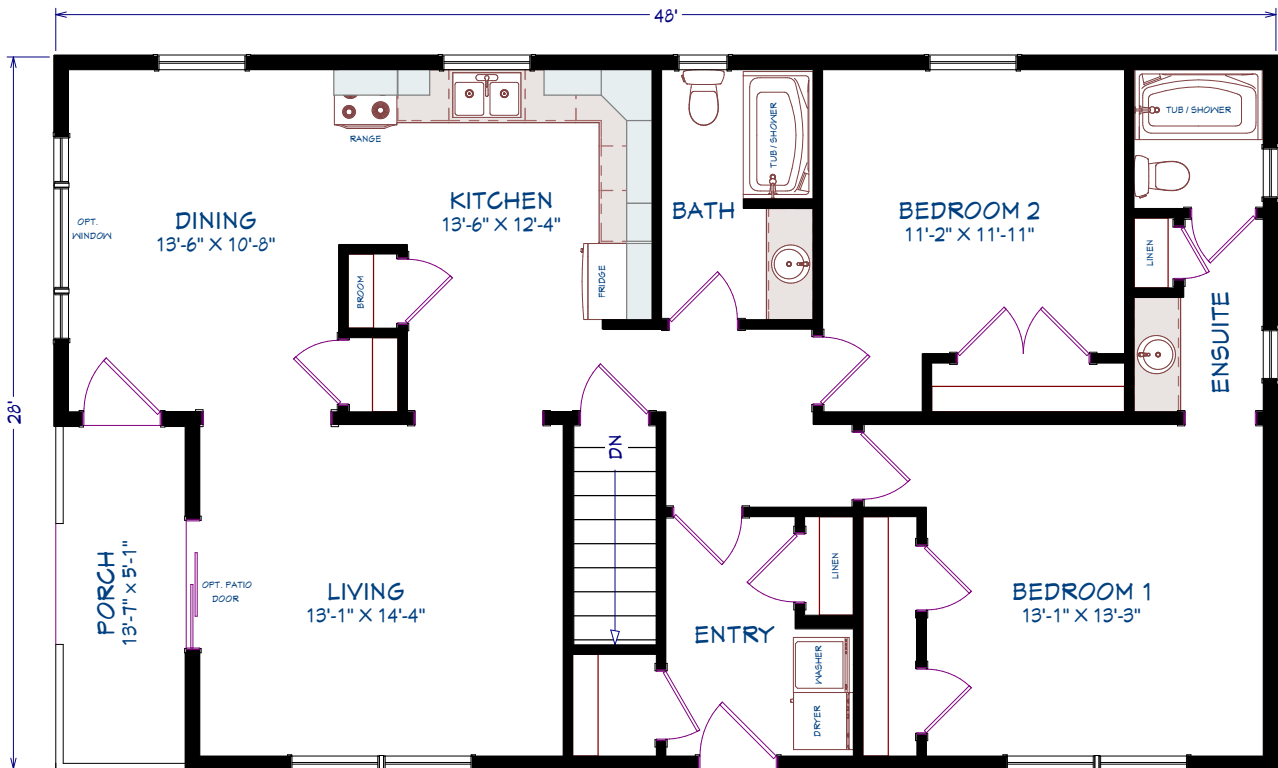
ML206
BUNGALOW / RANCH



2 BEDROOMS
2 BATHROOMS
1,274 SQUARE FEET
48'43" x 28' DIMENSIONS

OPTIONS

- Large dormer
- Eyebrow roof
- Dustpan roof
- Rear door glass
- Window and door colour
- Coloured siding accessories
- Patio door
- Picture window
- Exterior gable vent
- Shake vinyl siding
- Appliances



2 BEDROOMS, 2 BATHROOMS
1274 SQ FT

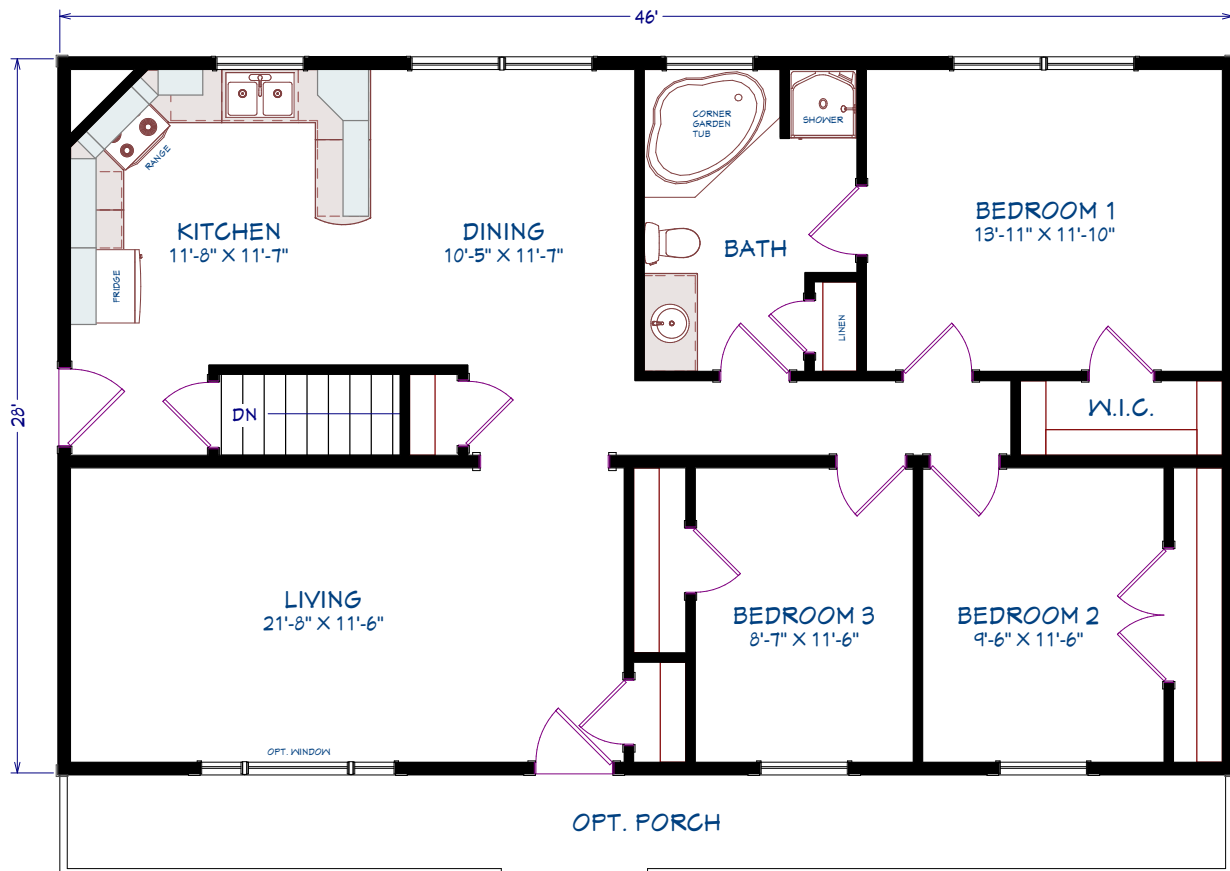
ML207
BUNGALOW / RANCH



3 BEDROOMS
1 BATHROOM
1,288 SQUARE FEET
46' x 28' DIMENSIONS

OPTIONS

- Front porch
- Queen Anne window grills
- Full glass front door
- Patio door
- 3 1/2" Window and door trim
- Appliances



3 BEDROOMS, 1 BATHROOM
1288 SQ FT

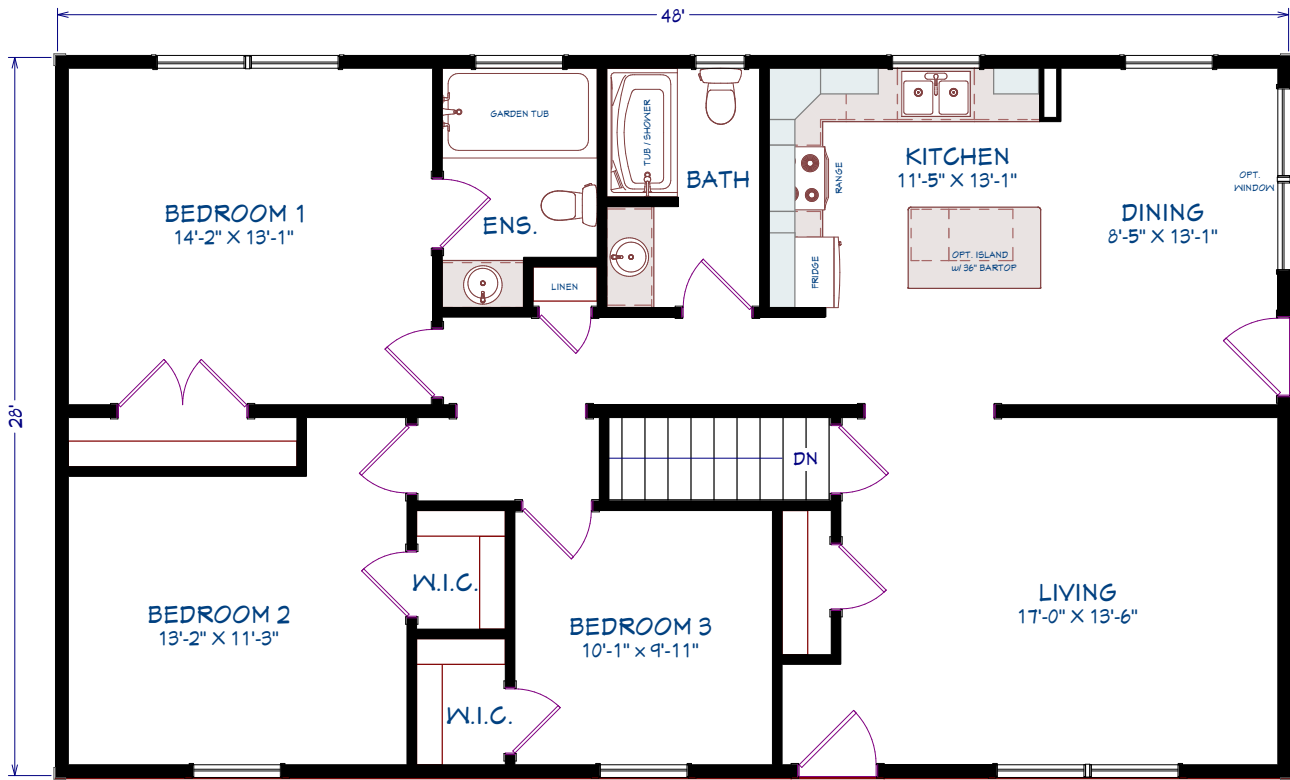
ML208
BUNGALOW / RANCH



3 BEDROOMS
2 BATHROOMS
1,344 SQUARE FEET
48' x 28' DIMENSIONS

OPTIONS

- Large dormer
- Eyebrow roof
- Octagon louver
- Front door ¾ glass
- Window and door trim colour
- Coloured siding accessories
- Stone vinyl siding
- Extra coach light
- Second dining room window
- Upper window grills
- Appliances



3 BEDROOMS, 2 BATHROOMS
1344 SQ FT

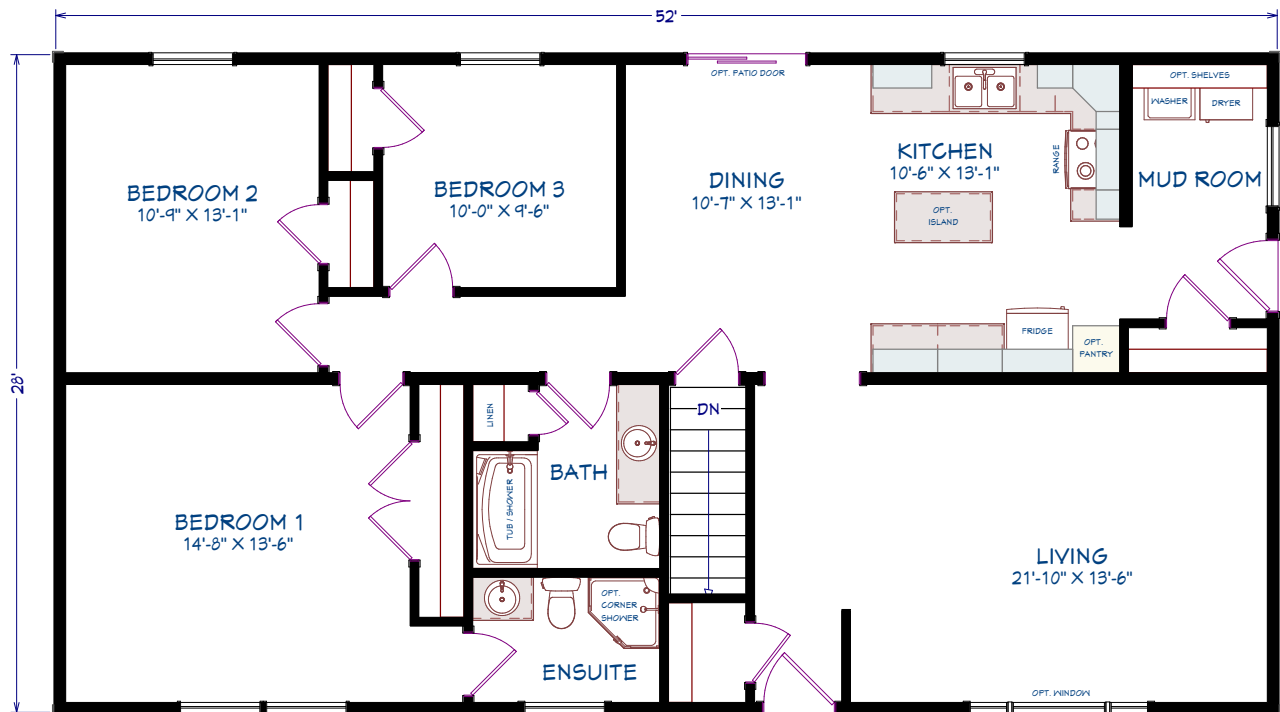
ML209
BUNGALOW / RANCH



3 BEDROOMS
2 BATHROOMS
1,456 SQUARE FEET
52' x 28' DIMENSIONS

OPTIONS

- Large dormer
- Eyebrow roof
- Window and door trim colour
- Coloured siding accessories
- Patio door
- Extra coach light
- Second dining room window
- Queen Anne window grills
- Appliances



3 BEDROOMS, 2 BATHROOMS
1456 SQ FT

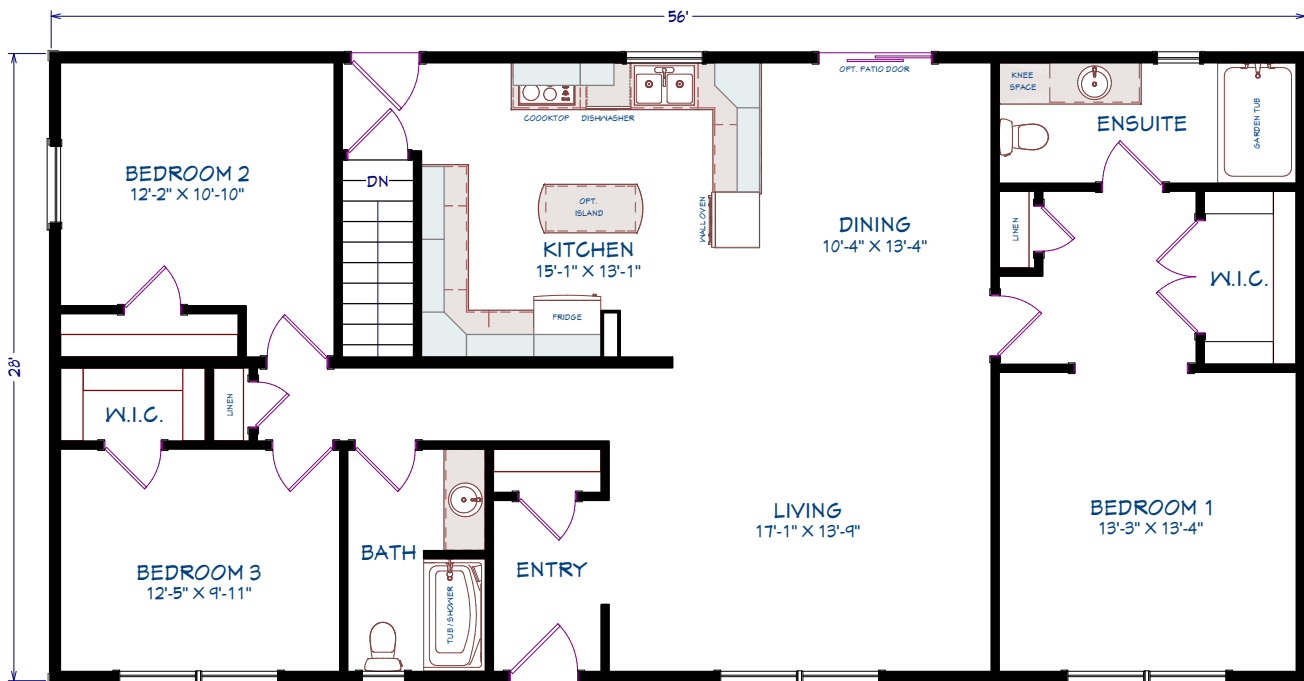
ML210
BUNGALOW / RANCH



3 BEDROOMS
2 BATHROOMS
1,568 SQUARE FEET
56' x 28' DIMENSIONS

OPTIONS

- Large dormer
- Small dormer
- Pillars
- Front door 3/4 glass
- Window and door colour
- Coloured siding accessories
- Upper window grills
- 5 1/2 Window trim
- Patio door
- Appliances



3 BEDROOMS, 2 BATHROOMS
1568 SQ FT

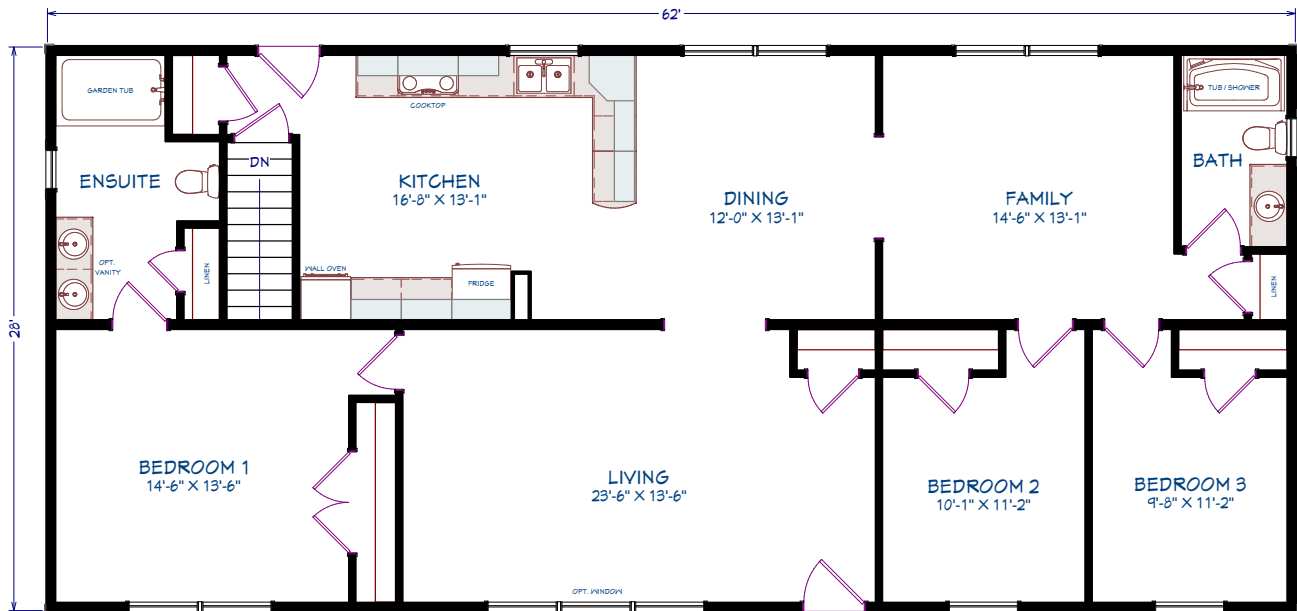
ML211
BUNGALOW / RANCH



3 BEDROOMS
2 BATHROOMS
1,736 SQUARE FEET
62' x 28' DIMENSIONS

OPTIONS

- Large dormer
- Eyebrow roof
- Dustpan roof
- Front door ¾ glass
- Mulled living room window
- Upper window grills
- 5 ½" Window trim
- Shake vinyl siding
- Extra coach light
- Appliances



3 BEDROOMS, 2 BATHROOMS
1736 SQ FT

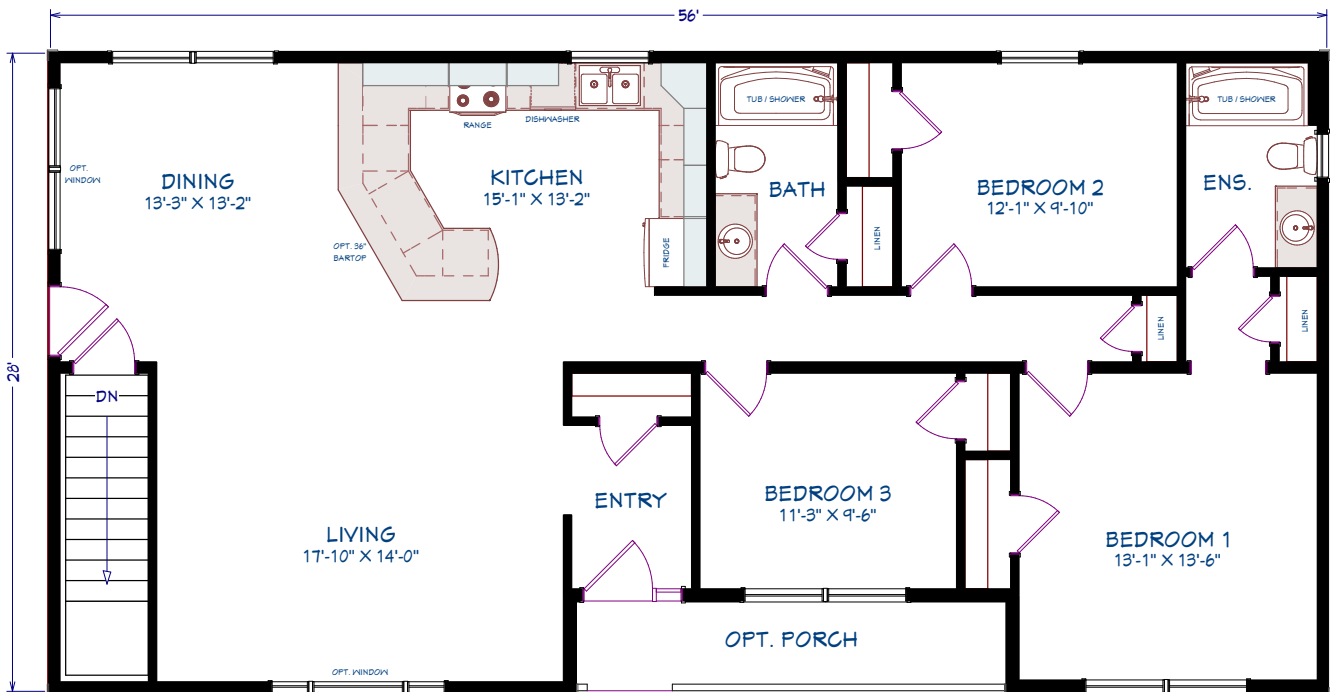
ML212
BUNGALOW / RANCH



3 BEDROOMS
2 BATHROOMS
1,492 SQUARE FEET
56' x 28'24' DIMENSIONS

OPTIONS

- Large dormer
- Gable vent
- Porch
- Front door sidelight
- Living room picture window
- Second dining room window
- Window and door colour
- Window pediments
- Stone vinyl siding
- Coloured siding accessories
- Appliances

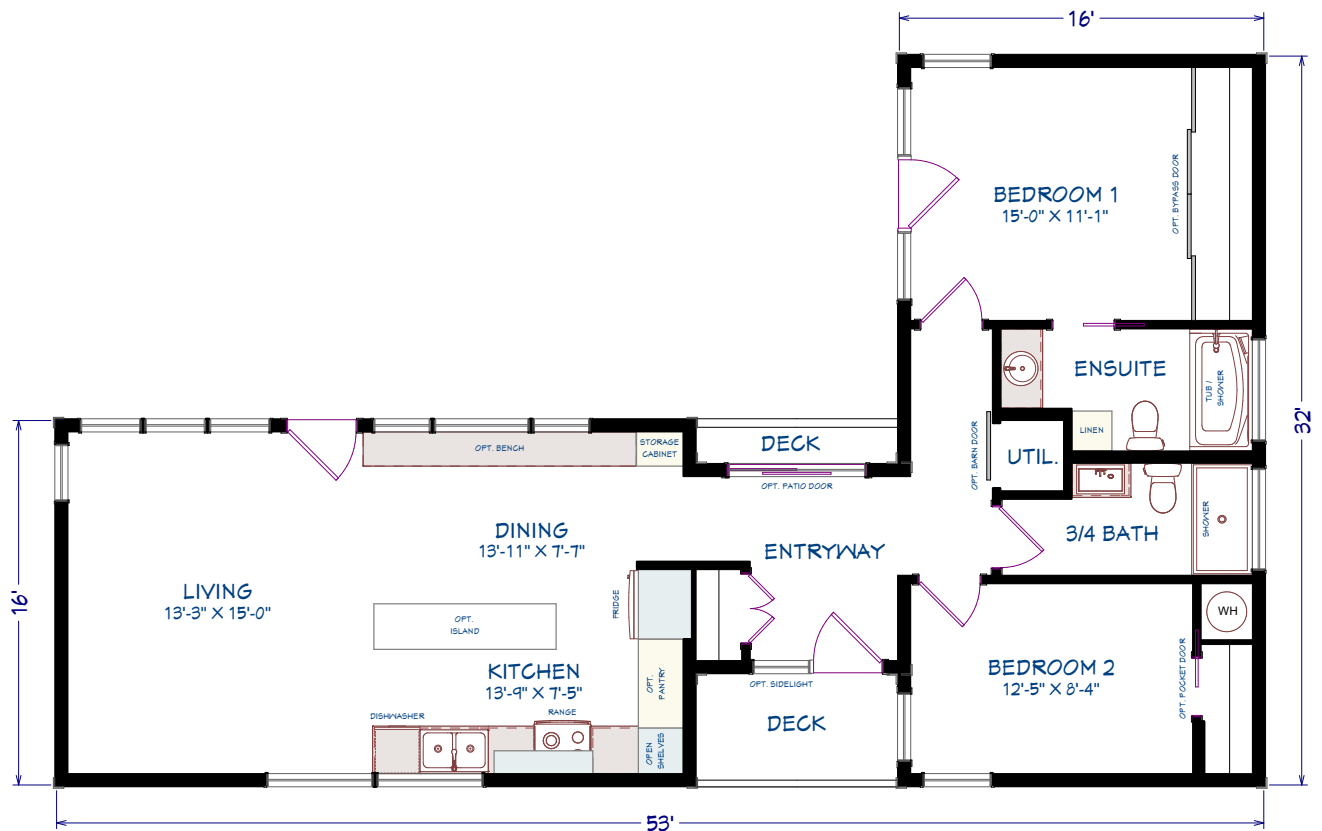


3 BEDROOMS, 2 BATHROOMS
1492 SQ FT

OASIS
BUNGALOW / RANCH

1,104 SQUARE FEET
2 BEDROOMS
2 BATHROOMS

OPTIONS
Kitchen island
Bench
Pantry
Oversized windows



2 BEDROOMS, 2 BATHROOMS
1104 SQ FT

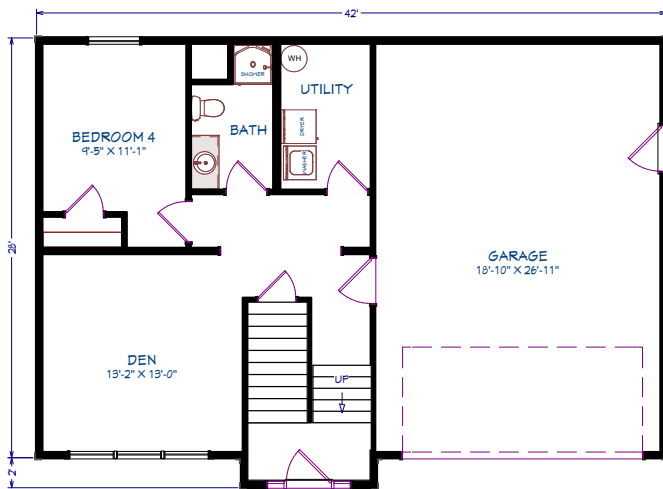
ML321
SPLIT ENTRY



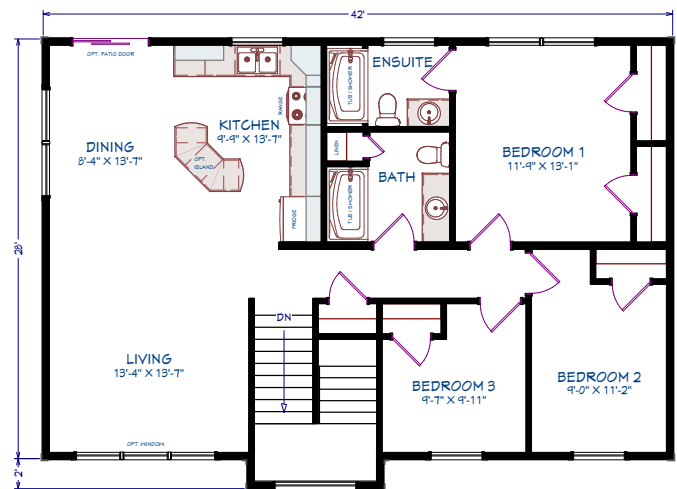
3 BEDROOMS
2 BATHROOMS
1,194 SQUARE FEET (1st Floor)
42' x 28' DIMENSIONS

OPTIONS

- 2' bump out front entry
- Front door and side lights
- Transom window over front door
- Mulled living room window
- Upper window grills
- 3 1/2" Window trim
- Roof over onsite garage door
- Second coach light
- Patio door
- Appliances
- Knee wall and basement material



SUGGESTED LOWER LEVEL



MAIN FLOOR
4 BEDROOMS, 3 BATHROOMS
1194 sq ft

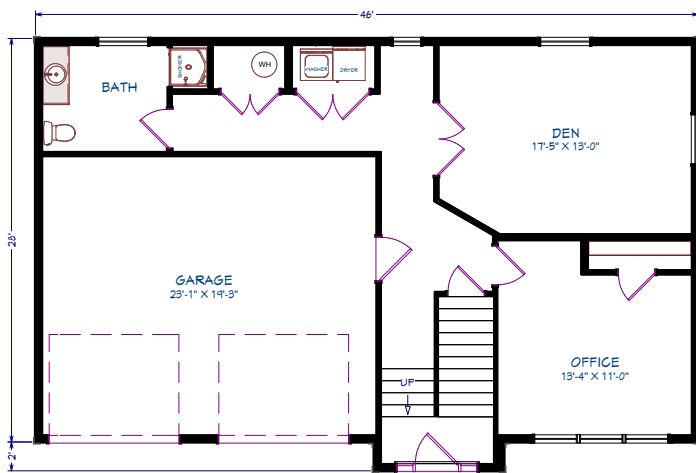
ML322
SPLIT ENTRY



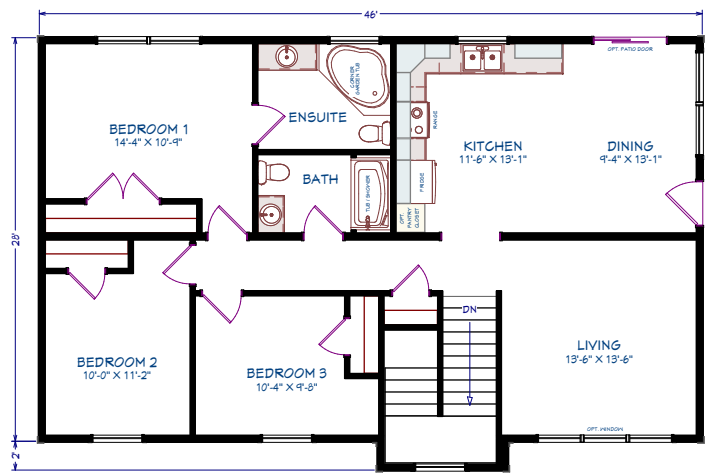
3 BEDROOMS
2 BATHROOMS
1,306 SQUARE FEET (1st Floor)
46' x 28' DIMENSIONS

OPTIONS

- 2' bump out
- Shake vinyl siding
- Large dormer
- Front door full glass and sidelights
- Window above front door
- Roof over onsite garage doors
- Queen Anne window grills
- Second coach light
- 3 1/2" Window trim
- Mulled living room window
- Window and door trim colour
- Coloured siding accessories
- Patio door
- Window pediments
- Appliances
- Knee wall and basement material

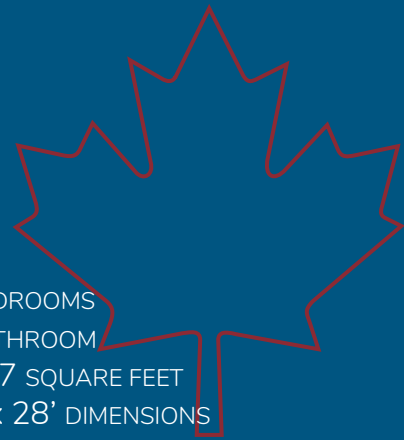


SUGGESTED LOWER LEVEL



MAIN FLOOR
3 BEDROOMS, 3 BATHROOMS
1306 sq ft

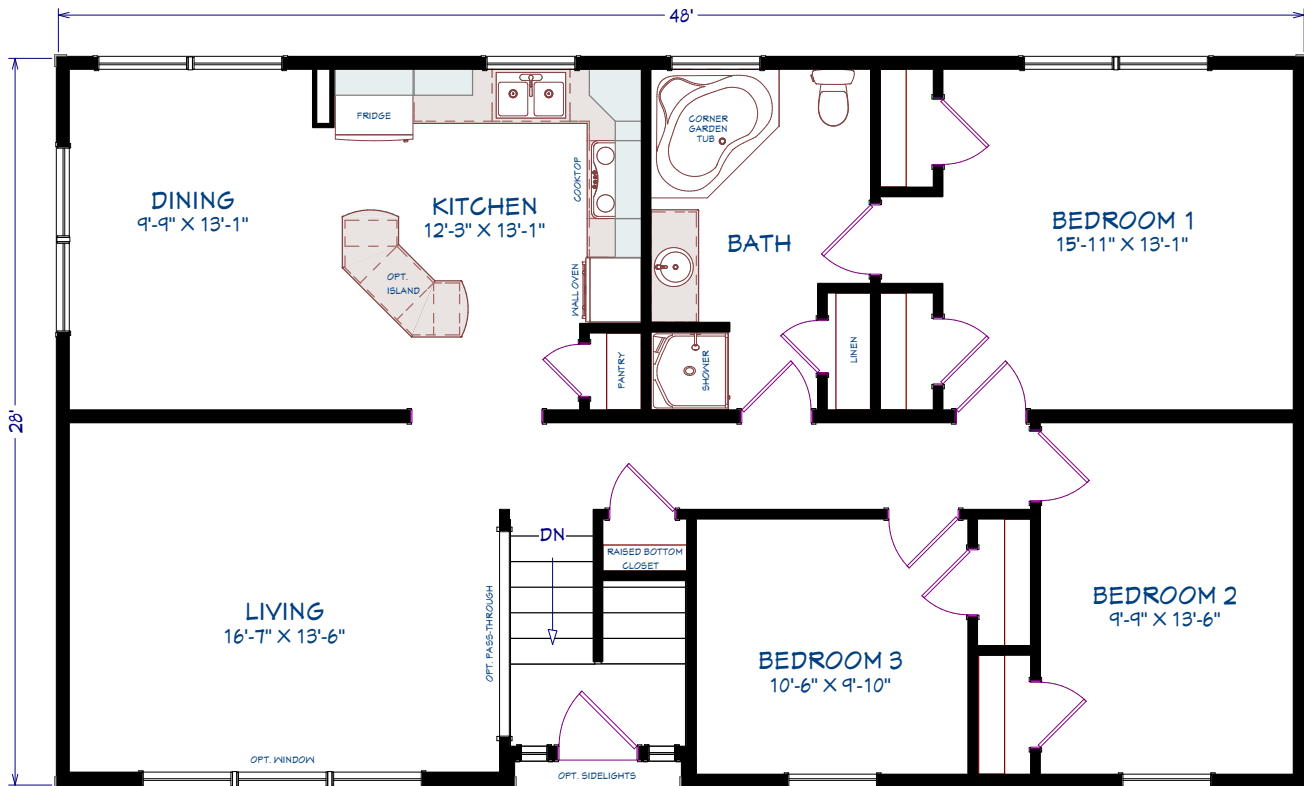
ML323
SPLIT ENTRY



3 BEDROOMS
1 BATHROOM
1,337 SQUARE FEET
48' x 28' DIMENSIONS

OPTIONS

- Large dormer
- Front door 3/4 glass and sidelights
- 1/2 moon window
- 3 1/2" Window trim
- Second coach light
- Mulled living room window
- Second dining room window
- Knee wall and basement material
- Appliances



3 BEDROOMS, 1 BATHROOM
1337 SQ FT

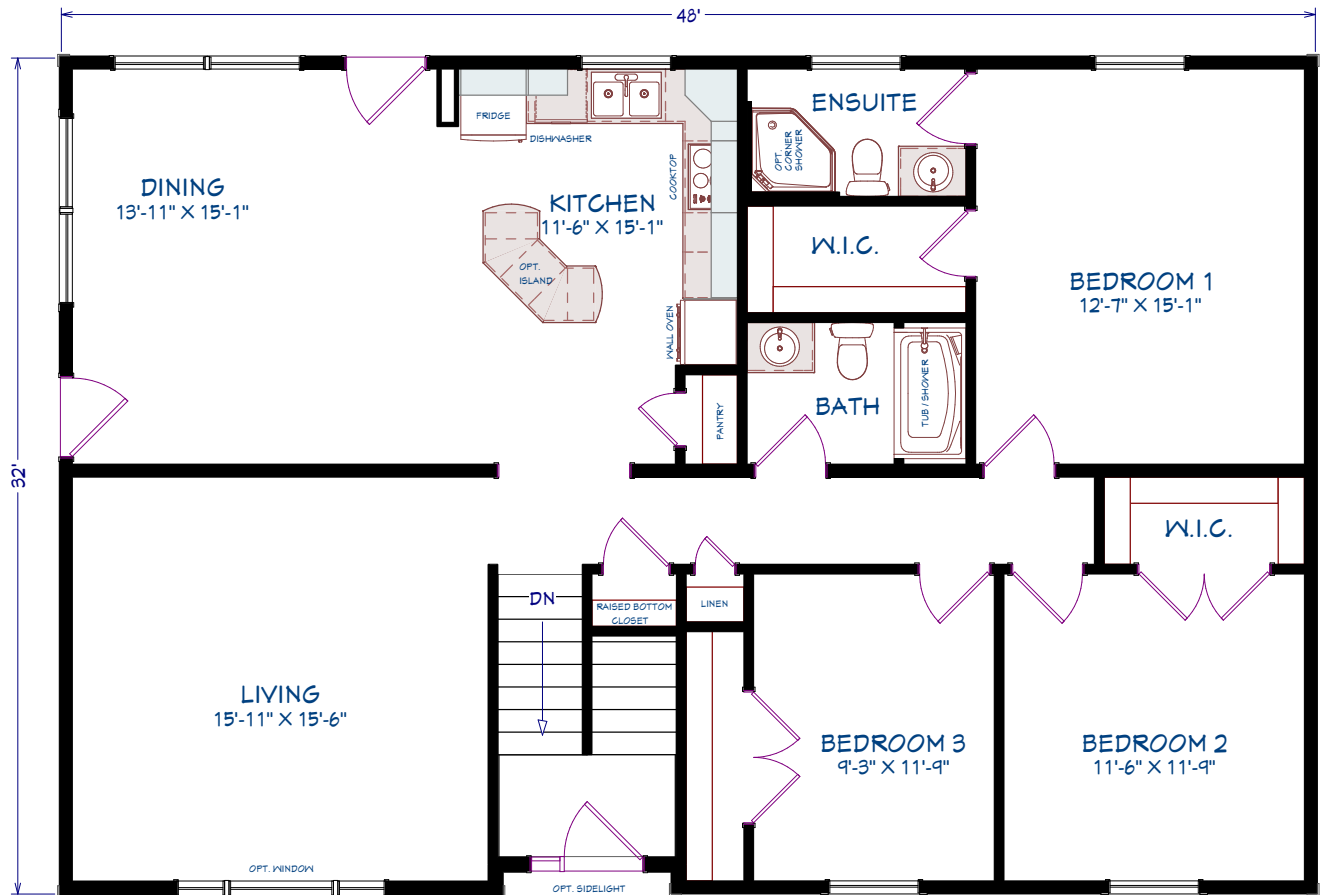
ML324
SPLIT ENTRY

3 BEDROOMS
2 BATHROOMS
1,528 SQUARE FEET
48' x 32' DIMENSIONS



OPTIONS

- Large dormer
- Octagonal gable vent
- Front door ¾ glass and side light
- 3 ½" Window trim
- Window and door trim colour
- Living room picture window
- Second coach light
- Window above front door
- Queen Anne window grills
- Coloured siding accessories
- Second dining room window
- Second dining room exterior door
- Appliances
- Knee wall and basement material



3 BEDROOMS, 2 BATHROOMS
1528 SQ FT



WELCOME HOME

All Maple Leaf Home interiors are designed to your exact specifications. Built the way you want it, from flooring to appliances.

MAPLE LEAF  HOMES



MAPLE LEAF HOMES

You have the option of choosing from our large selection of some of the best designs in the industry or, if you have your own plans, we can work with you to build your home, your way.

Once you choose the floor plan you like, you get to pick your options. There are hundreds of options to choose from, everything from the colour of your siding to the hardware on your kitchen cabinets. We will build your home, your way.

To start designing your new home, visit our website at www.mapleleafhomes.ca to find a retailer in your area.



MAPLE LEAF HOMES

655 Wilsey Road
Fredericton, NB
Canada, E3B 7K3

Tel: 506 459 1335
Email: hello@mlhomes.ca

NOTE Maple Leaf Homes reserve the right to make changes to this brochure without prior notice and without incurring any obligations to any previous, present or future customers as the result of any changes made.